

MITSUBISHI

Center Panel and Drink Holder Reconfiguration Instructions



Toppo **BJ** ***S***
(GF-H42A)

Description	Page No.
Center Panel and Drink Holder (OEM Installed and As-Purchased - Used)	1
Center Panel and Drink Holder (Post Rehab and Re-Configuration)	2
Hazards Switch and Cigarette Lighter Socket Wiring Diagram	3
Center Panel and Drink Holder (OEM and Post Installation)	4

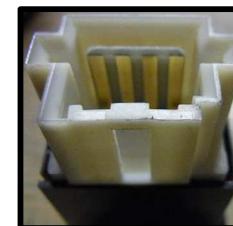
Center Panel and Drink Holder
(OEM Installed and
As-Purchased - Used)

Center Panel (OEM Installed)

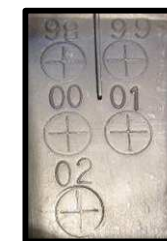


Compartment
1.5 DIN (7 x 3 in - 180 x 75 mm)

Center Panel and Drink Holder (As-Purchased - Used)



Drink Holder
0.5 DIN (7 x 1 in - 180 x 25 mm)



Compartment
1 DIN (7 x 2 in - 180 x 50 mm)

**Center Panel and Drink Holder
(Post Rehab and Reconfiguration)**



**Center Panel
(OEM)**



**Drink Holder
0.5 DIN (7 x 1 in - 180 x 25 mm)
(As-Purchased - Used)**



**Compartment
1.5 DIN (7 x 3 in - 180 x 75 mm)
(Spare Parts)**



**Center Panel
(OEM - with Re-Used 1 DIN Compartment and
0.5 DIN Drink Holder)**



**Center Panel
(As-Purchased - Used)**



**Hazards Switch
(Spare Parts)**



**Compartment
1 DIN (7 x 2 in - 180 x 50 mm)**



**Cigarette Lighter Socket
(Spare Parts)**



**Center Panel
(Spare Parts)**



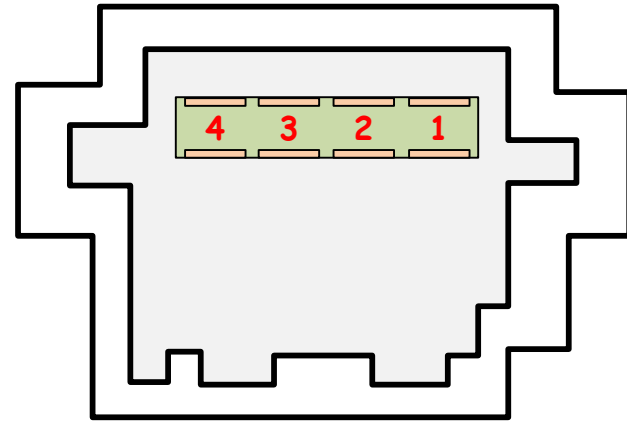
Hazards Switch and Cigarette Lighter Socket Wiring Diagram

<Solid Colors>		
B	B	Black
G	G	Green

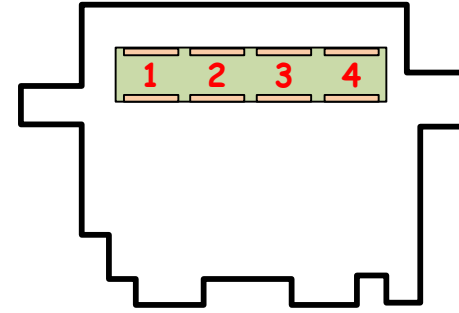
<Solid Color/Stripe>		
G/W	G/W	Green/White
Y/R	Y/R	Yellow/Red



Hazards Switch Socket



Hazards Switch
(Looking at Pin Side)

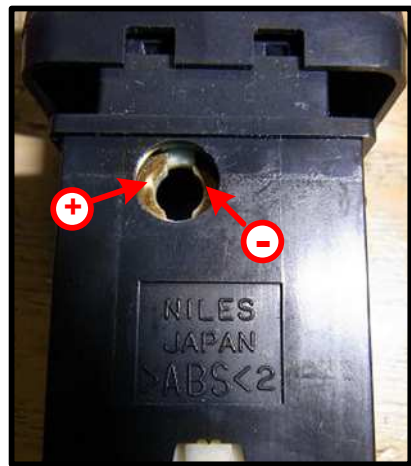


Hazards Switch Coupler
(Looking at Pin Side)

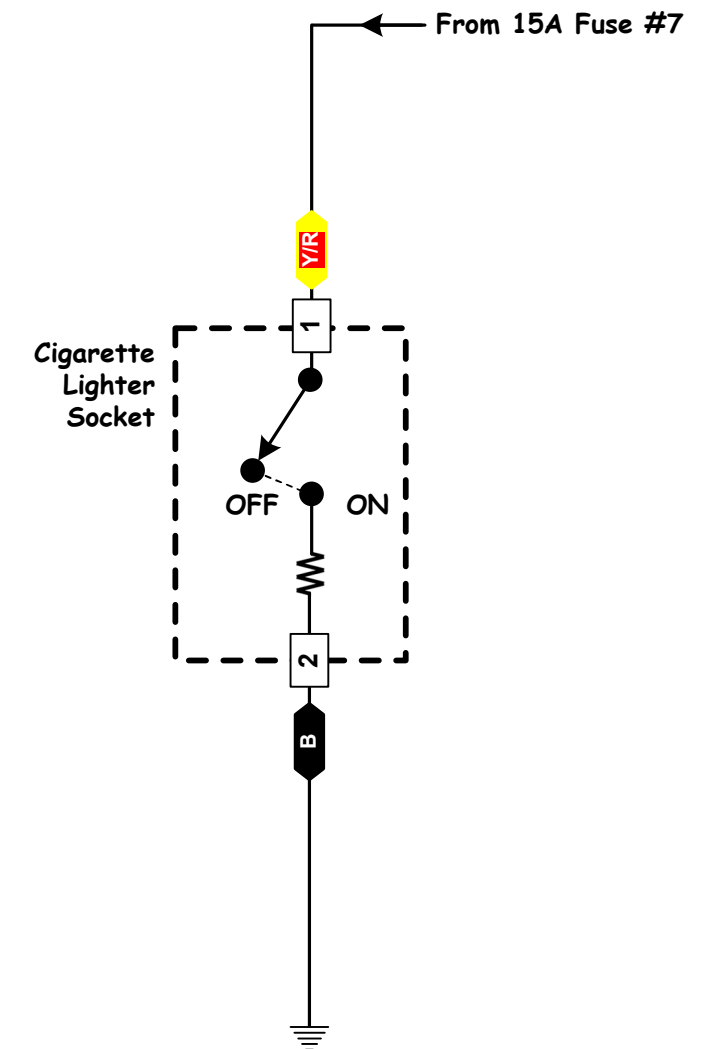
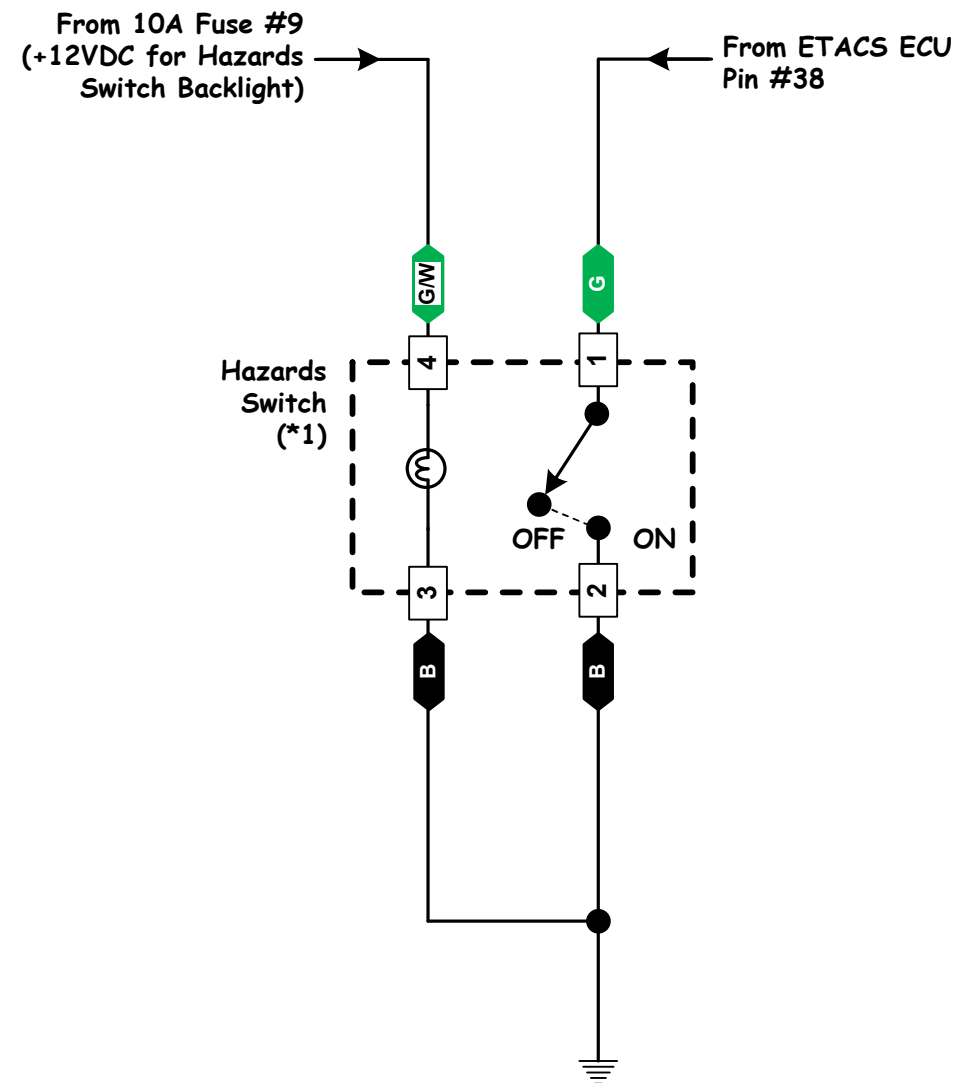


1

2



Hazards Switch
Backlight Socket



Notes: *1 - Momentary Contact Switch

**Center Panel and Drink Holder
(OEM and Post Installation)**



OEM Installed Center Panel



Post Installation Center Panel with Drink Holder (Pushed In)



Post Installation Center Panel with Drink Holder (Pulled Out)

